

STANDARD GROUND TAXI PROCEDURES

1. General
  - a. Departing IFR flights shall contact JEJU DELIVERY(121.925 MHz) to obtain ATC clearance at least 10 minutes prior to ETD and shall obtain push-back clearance and taxi instruction from JEJU GROUND(121.65 MHz).
  - b. TWY E3 not available for aircraft with a wingspan of 118 ft (36 m) or longer.
2. Radio frequency transfer point  
Aircraft shall contact 118.1 MHz(JEJU TOWER) at the following point unless otherwise instructed by ATC.

Runway in use	Radio frequency transfer point
RWY 07	Passing TWY G2
RWY 25	Runway 13/31 holding position of TWY P, E1, E2, E3
RWY 31	

Restriction of RWY 31

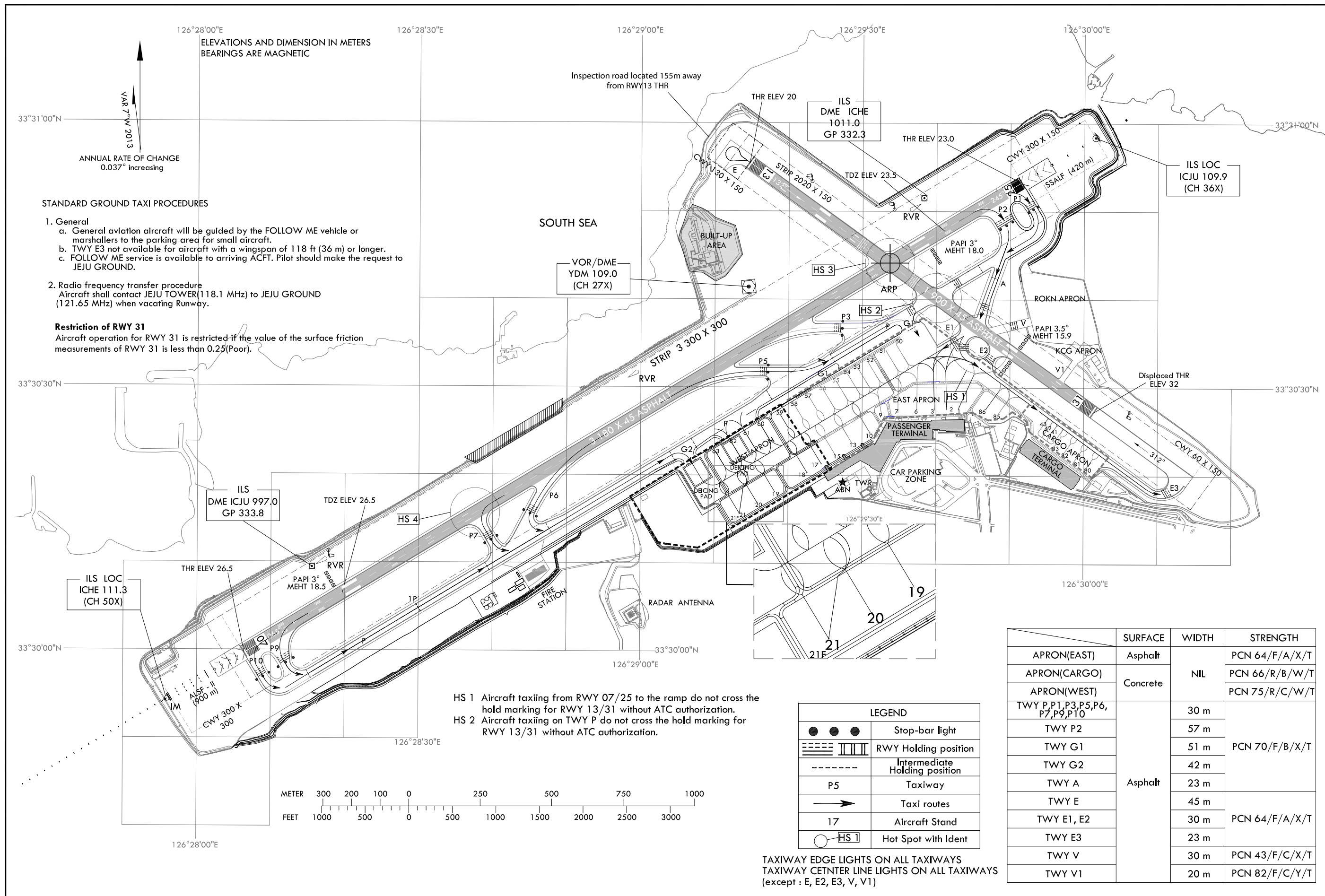
Aircraft operation for RWY 31 is restricted if the value of the surface friction measurements of RWY 31 is less than 0.25(Poor).

- HS 1 Aircraft taxiing from the ramp to RWY 07/25 do not cross the hold marking for RWY 13/31 without ATC authorization.  
 HS 2 Aircraft taxiing on TWY P do not cross the hold marking for RWY 13/31 without ATC authorization.

LEGEND

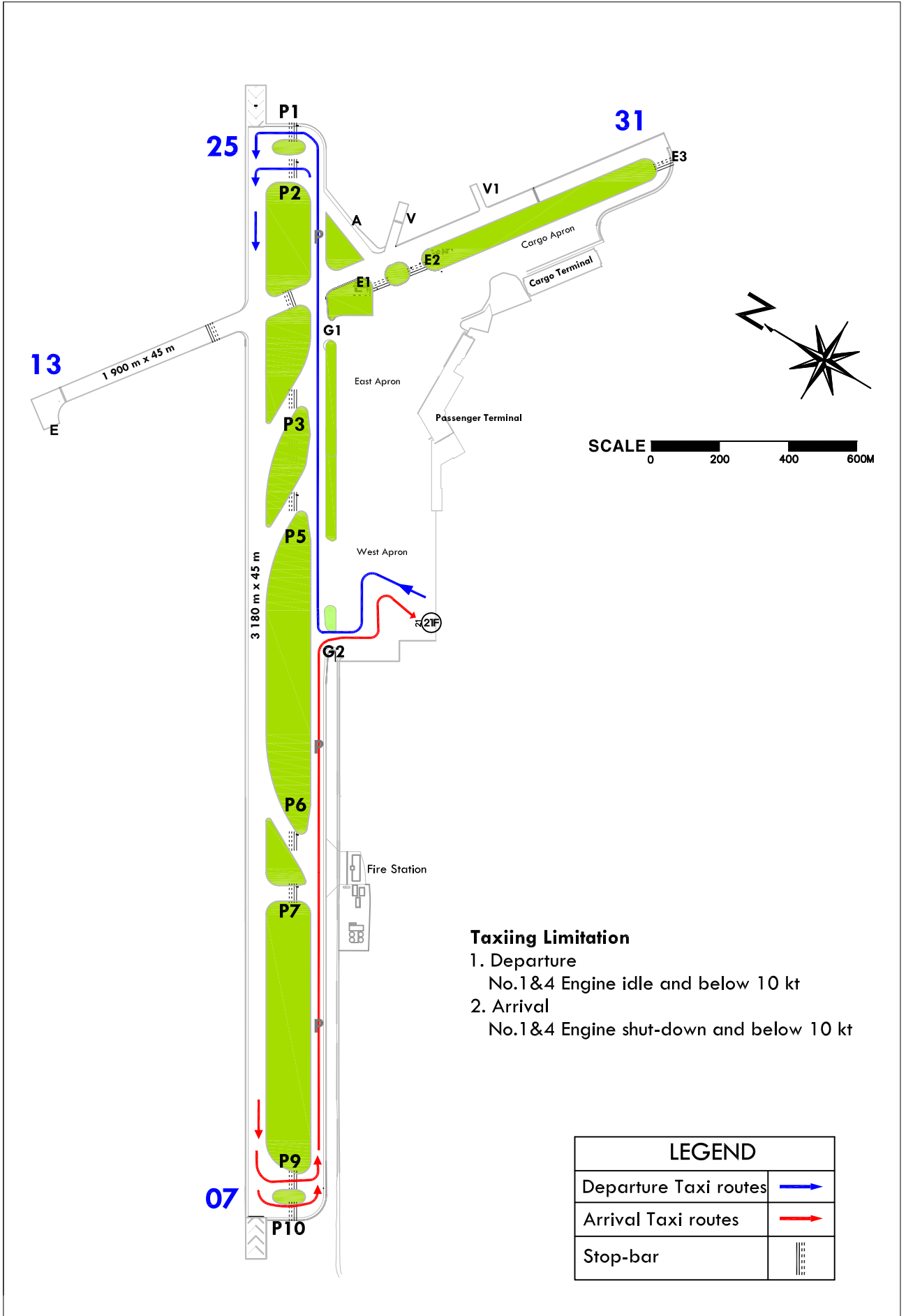
● ● ●	Stop-bar light
▬ ▬ ▬ ▬ ▬ ▬ ▬ ▬ ▬ ▬	RWY Holding position
- - - - -	Intermediate Holding position
P5	Taxiway
→	Taxi routes
17	Aircraft Stand
○ HS 1	Hot Spot with Ident

	SURFACE	WIDTH	STRENGTH	
APRON(EAST)	Asphalt		PCN 64/F/A/X/T	
APRON(CARGO)	Concrete	NIL	PCN 66/R/B/W/T	
APRON(WEST)			PCN 75/R/C/W/T	
TWY P, P1, P3, P5, P6, P7, P9, P10	Asphalt	30 m	PCN 70/F/B/X/T	
TWY P2		57 m		
TWY G1		51 m		
TWY G2		42 m		
TWY A		23 m		
TWY E		45 m		
TWY E1, E2		30 m		PCN 64/F/A/X/T
TWY E3		23 m		
TWY V		30 m		PCN 43/F/C/X/T
TWY V1		20 m		PCN 82/F/C/Y/T



JEJU TWR 118.1  
JEJU GND 121.65

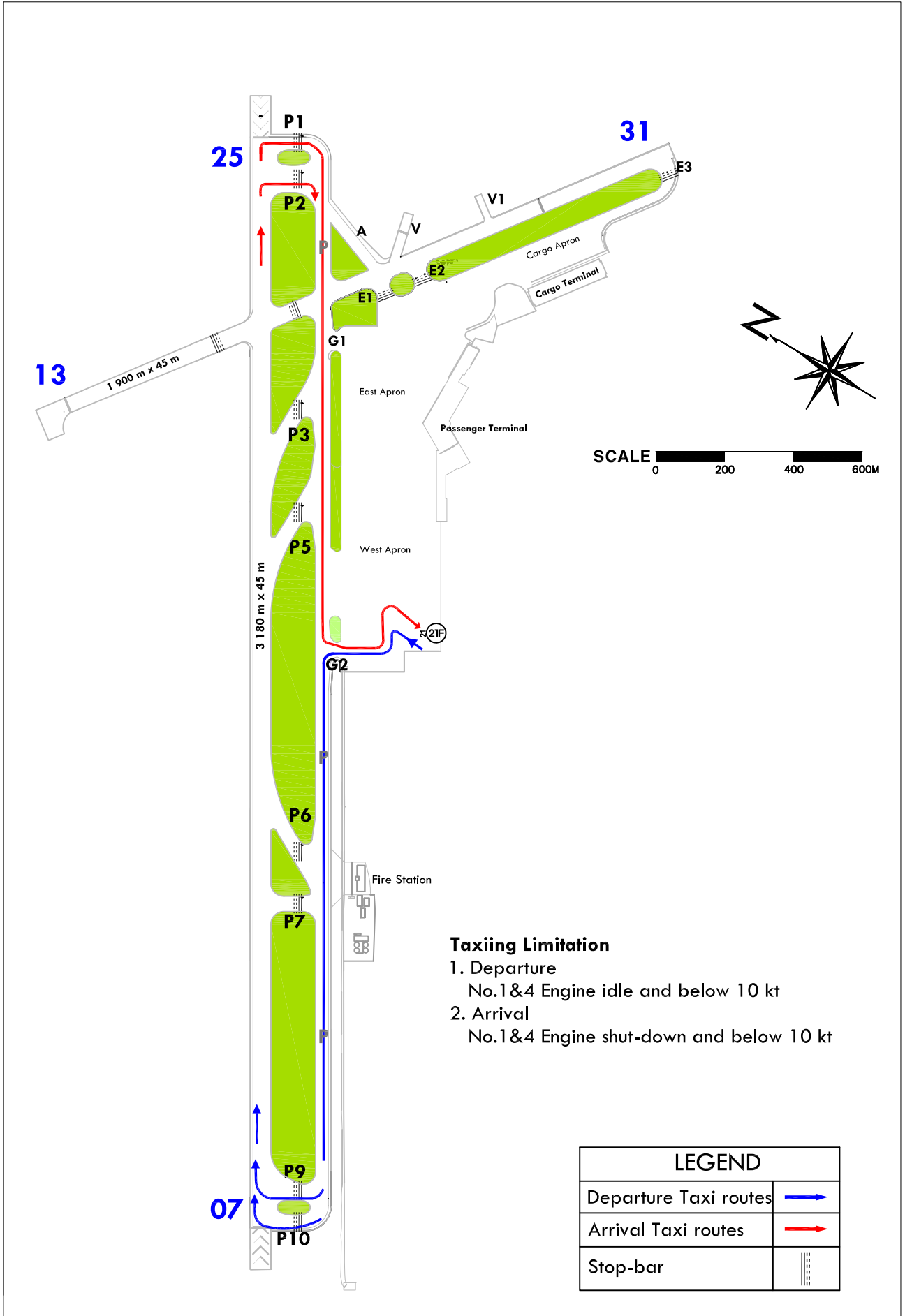
"F" aircraft Available taxi route - RWY 25 IN USE



Change : TWY information.

JEJU TWR 118.1  
JEJU GND 121.65

"F" aircraft Available taxi route - RWY 07 IN USE



Change : TWY information.